



THE ORCHID

FIVE BED HOME



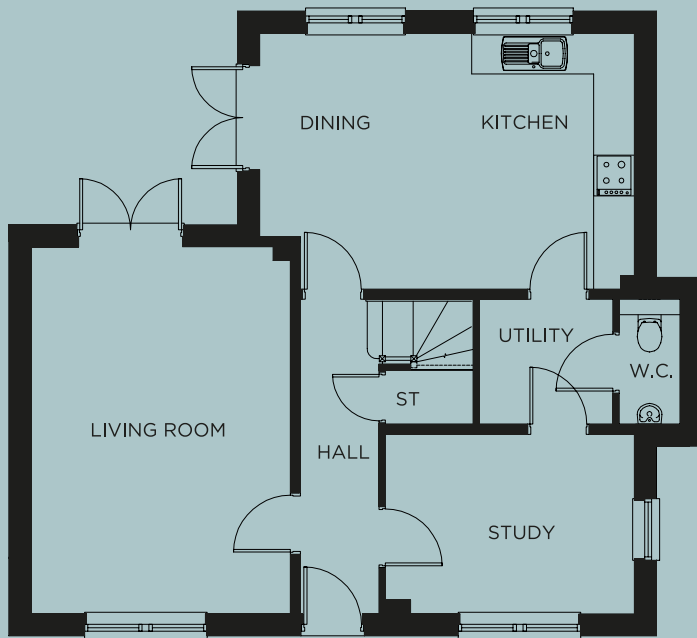
Five bedroom stone detached three storey family home. Block paved drive leading to detached double garage and two parking bays.

Ground floor entrance hall leads through to living room with dual aspect and french doors leading out to the rear patio and garden. Contemporary kitchen/dining to the rear with integrated appliances and further french doors leading onto patio and garden area. Separate utility and WC. Ground floor study.

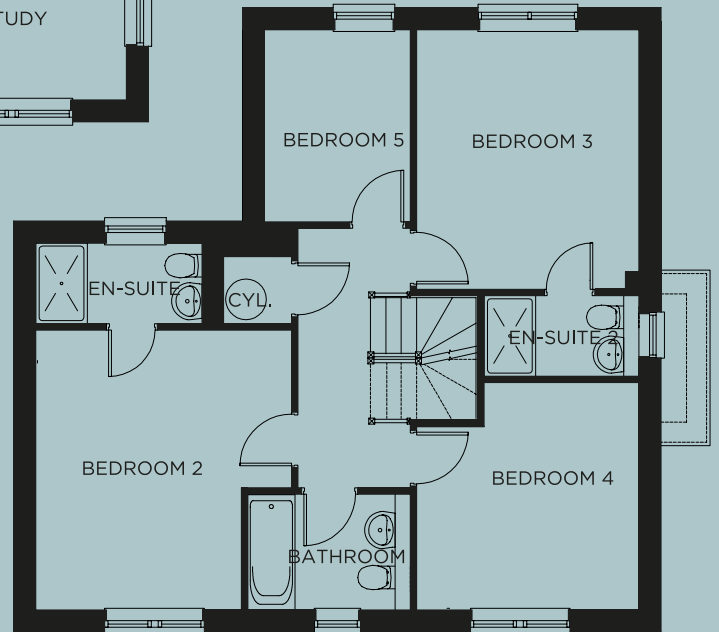
First floor: Two double bedrooms with en-suites. Further two bedrooms and family bathroom.

Second floor: Master suite with dressing room and double shower en-suite with generous storage.

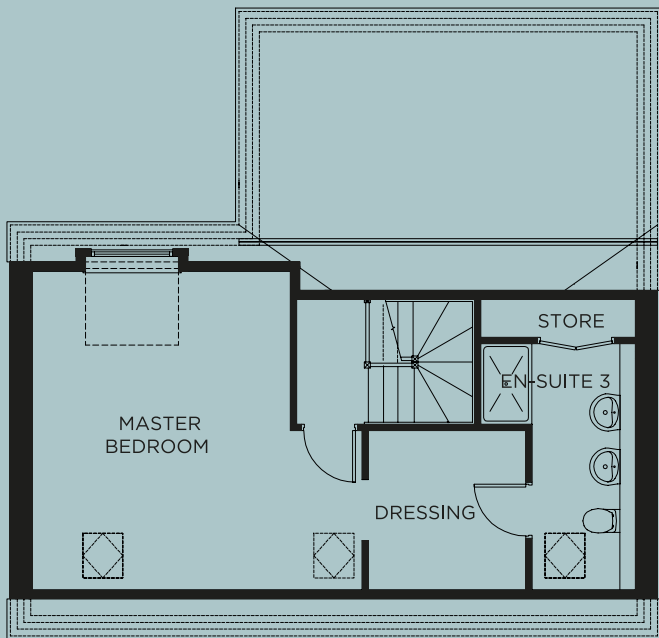




GROUND FLOOR



FIRST FLOOR



SECOND FLOOR

GROUND FLOOR

- Living Room..... 5405mm (17' 9") x 3815mm (12' 6")
- Kitchen/
Dining Room..... 5518mm (18' 1") x 3765mm (12' 4")
- Utility 1972mm (6' 6") x 1830mm (6' 0")
- Study..... 3673mm (12' 1) x 2640mm (8' 8")

FIRST FLOOR

- Bedroom 2..... 4130mm (13' 7") x 3772mm (12' 5")
- Ensuite 2..... 2679mm (8' 9") x 1188mm (3' 11")
- Bedroom 3..... 3830mm (12' 7") x 3281mm (10' 9")
- Bedroom 4 3355mm (11' 0") x 3281mm (10' 9")
- Bedroom 5..... 2808mm (9' 3") x 2150mm (7' 1")
- Bathroom..... 2406mm (7' 11") x 1708mm (5' 7")

SECOND FLOOR

- Master Bedroom ... 5097 (6' 9") X 4905 (15' 11")
- Dressing Room 2380 (7' 10") X 2333 (7' 8")
- Ensuite..... 3664 (12' 0") X 2301 (7' 7")