



THE HONEYSUCKLE

FOUR BED HOME



MORWICK GARDENS
WARKWORTH



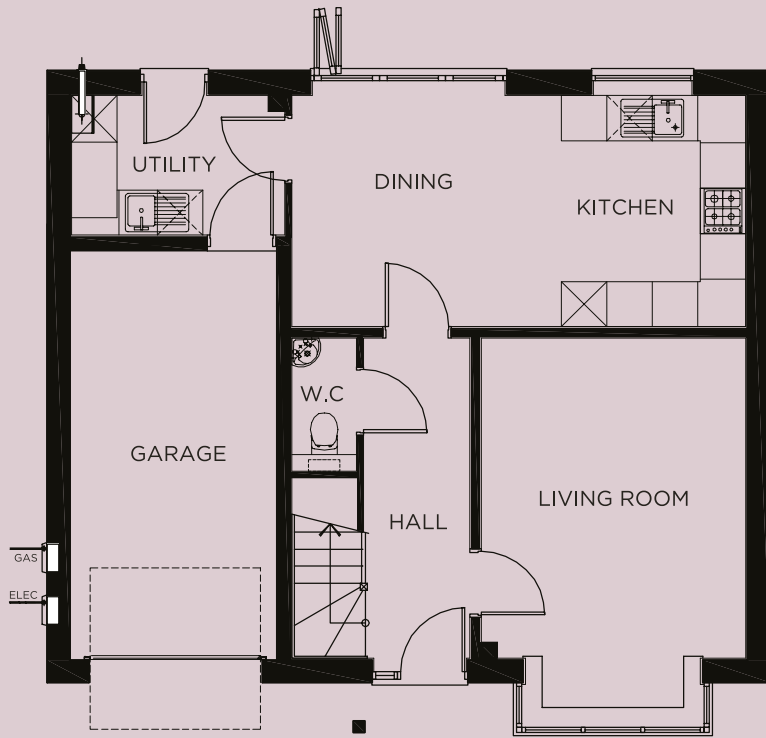
Four bed detached family home with block pave drive leading to single integral garage and two parking spaces.

Ground floor entrance hall with WC, leading to spacious living room with walk-in bay window.

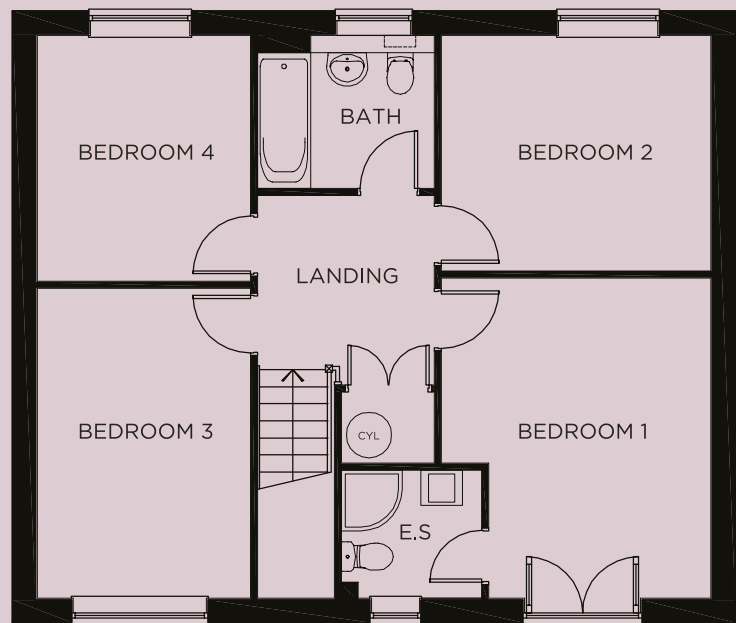
Contemporary kitchen/dining room with integrated appliances. Bi-folding doors leading onto rear patio and garden. Separate utility with access to integrated garage.

First floor: Master bedroom with Juliette balcony with en-suite shower room. A further three bedrooms with family bathroom.





GROUND FLOOR



FIRST FLOOR

GROUND FLOOR

Living Room.....	3488mm (11' 5") x 4905mm (16' 1")
Kitchen/Dining	5990mm (19' 7") x 3060mm (10' 0")
Utility	2819mm (9' 2") x 1850mm (6' 0")

FIRST FLOOR

Bedroom 1.....	3562mm (11' 8") x 4237mm (13' 10")
En-Suite	1850mm (6' 0") x 1690mm (5' 6")
Bedroom 2.....	3562mm (11' 8") x 3110mm (10' 2")
Bedroom 3.....	2819mm (9' 2") x 4100mm (13' 5")
Bedroom 4	2819mm (9' 2") x 3247mm (10' 7")
Bathroom.....	2335mm (7' 7") x 2025mm (6' 7")