



THE POPPY

TWO BED HOME



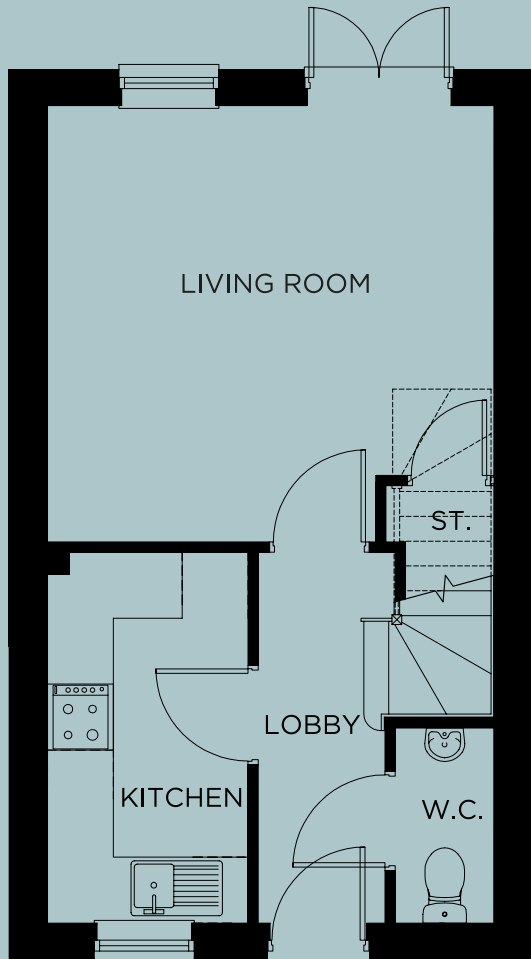
Two bed stone fronted home.

Hallway leading to kitchen with integrated appliances. Living room is accessed off the hall with french doors leading to the rear patio and garden. Ground floor WC.

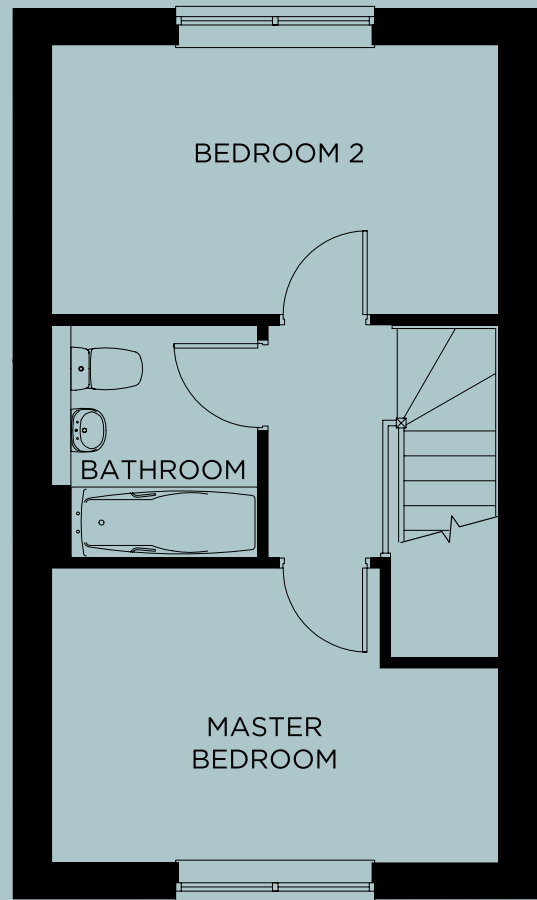
First floor: Two double bedrooms and family bathroom with shower over bath.

One parking space.





GROUND FLOOR



FIRST FLOOR

GROUND FLOOR

Living Room..... 4055mm (13' 4") x 3970mm (13' 0")
 Kitchen/Dining Room..... 3358mm (11' 0") x 1823mm (6' 0")

FIRST FLOOR

Master Bedroom 4055mm (13' 4") x 2679mm (8' 9")
 Bedroom 2..... 4055mm (13' 4") x 2426mm (8' 0")
 Bathroom..... 2111mm (6' 11") x 1873mm (6' 2")