



THE FOXGLOVE

THREE BED HOME

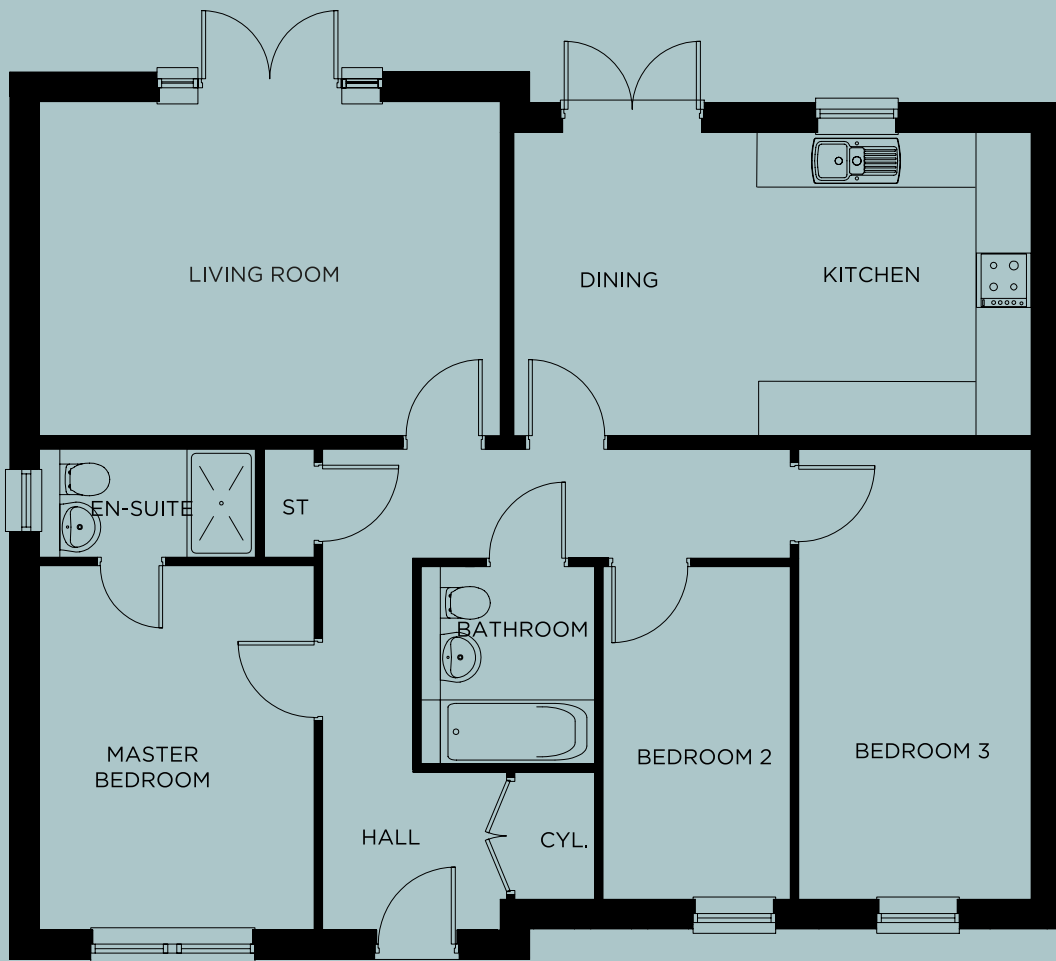


Three bedroom detached bungalow with block paved drive with single garage and parking bay.

Entrance hall offers access to spacious living room with french doors leading to rear patio and garden. Contemporary open plan kitchen/dining with integrated appliances with further french doors onto rear patio.

First floor: Master bedroom with double shower en-suite. Two further bedrooms and family bathroom.





GROUND FLOOR

GROUND FLOOR

Living Room.....	5068mm (16' 8") X 3670mm (12' 0")
Kitchen/ Dining room	5490mm (18' 0") X 3333mm (10' 11")
Master Bedroom	4013mm (13' 2") X 3025mm (9' 11")
Ensuite.....	2378mm (7' 10") X 1188mm (3' 11")
Bedroom 2.....	3665mm (12' 0") X 2070mm (6' 9")
Bedroom 3.....	4950mm (16' 3") X 2058mm (6' 9")
Bathroom.....	2176mm (7' 2") X 1916mm (6' 3")